

Table 1-2 JAMMA Pin Assignments

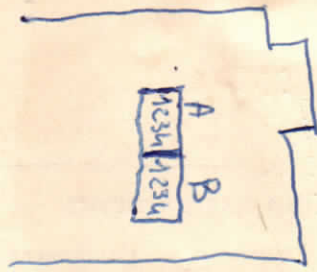
Solder Side			Component Side		
Color	Signal	Pin	Pin	Signal	Color
<b>18-Gauge (Power) Wires</b>					
BN	+V RTN Ⓞ	A	1	+V RTN Ⓞ	BN
BN	+V RTN Ⓞ	B	2	+V RTN Ⓞ	BN
R	+5V Ⓞ	C	3	+5V Ⓞ	R
R	+5V Ⓞ	D	4	+5V Ⓞ	R
OR	-5V AC	E	5	-5V AC	OR
Y	+12V Ⓞ	F	6	+12V Ⓞ	Y
<b>Non-Power Wires</b>					
	KEY	H	7	KEY	
V W	COIN CTR 2 Ⓞ	J	8	COIN CTR 1 Ⓞ	BU/W
		K	9	COIN LOCK-OUT	
W (??)	SPKR -	L	10	SPKR +	BN (??)
	AUDIO GND	M	11	AUDIO +	
GN	GREEN Ⓞ	N	12	RED Ⓞ	R
BN	SYNC Ⓞ	P	13	BLUE Ⓞ	BU
GY	SERVICE SW AC	R	14	VIDEO GND Ⓞ	BK
		S	15	SELF-TEST Ⓞ	W
OR	COIN 2 Ⓞ	T	16	COIN 1 Ⓞ	Y
Y-BK	START 2 AC	U	17	START 1 AC	W/BK
Y-BN	UP 2 AC	V	18	UP 1 AC	W/BN
Y-R	DOWN 2 Ⓞ	W	19	DOWN 1 Ⓞ	W/R
Y-OR	LEFT 2 Ⓞ	X	20	LEFT 1 Ⓞ	W/OR
Y-W	RIGHT 2 Ⓞ	Y	21	RIGHT 1 Ⓞ	W/Y
Y-GN	ROTATE 2 Ⓞ	Z	22	ROTATE 1 Ⓞ	W/GN
Y-BU	SWITCH B2 AC	a	23	SWITCH B1 AC	W/BU
Y-V	SWITCH C2 AC	b	24	SWITCH C1 AC	W/V
		c	25		
		d	26		
BK/W	GND Ⓞ	e	27	GND Ⓞ	BK/W
BK/W	GND Ⓞ	f	28	GND Ⓞ	BK/W

AC means no connection required for Tetris. (??) means twisted pair.

- ① Two of these four (large BN) wires must go to the 5V Return (GND) terminal on the power supply. The other two must go to the 12V RTN (GND) terminal of the power supply.
- ② At least two of these four wires must go to the 5V terminal on the power supply. One wire should go to the positive sense terminal on the power supply, if it exists. Shrink-tube the ends of unused wires to prevent shorting.
- ③ Both of these wires must go to the +12V terminal of the power supply.
- ④ These wires should go to the negative side of the coin counter(s). The positive side of the coin counter(s) should go to the +5V or +12V terminal of the power supply, depending on whether the coin counter is a 5V or 12V counter. *Note: Do not use 24V counters.*

- ⑤ These five wires attach to the video display (see Table 3-1).
- ⑥ A self-test switch is located at 50J on the PCB. If you want an external self-test switch, first make sure the switch on the PCB is off. Then connect this wire to the N.O. terminal on the external self-test switch. Connect the common terminal of the self-test switch to one of the BK/W wires (GND).
- ⑦ Connect these wires to the N.O. terminals of the two coin switches. Connect one of the BK/W wires to the common terminals of the coin switches.
- ⑧ Connect these wires to the N.O. terminals of the control switches. Connect the common terminals of the switches to one of the BK/W wires.
- ⑨ You must connect one of these four wires to the negative sense terminal of the power supply (if it exists). The other three wires should be used for the switch common terminals as described in notes 6, 7, and 8.

~~X Software Programme were interrupted  
Viano alle Pinterie ogni momento~~



SWA

↓ serve x entrance in Test  
ON Test  
OFF Normale



## TETRIS



X Cambiare programma alla porta  
usare { interruttore } e macchina  
accesa poi mettere lo switch 1-A in  
on cambiare programma usando  
incauettini e pulsanti di gioco.  
Fatto il programma desiderato  
andare avanti sino alla Fine  
poi rimettere lo switch 1-A in  
OFF poi l'interruttore nella pos-  
izione iniziale