

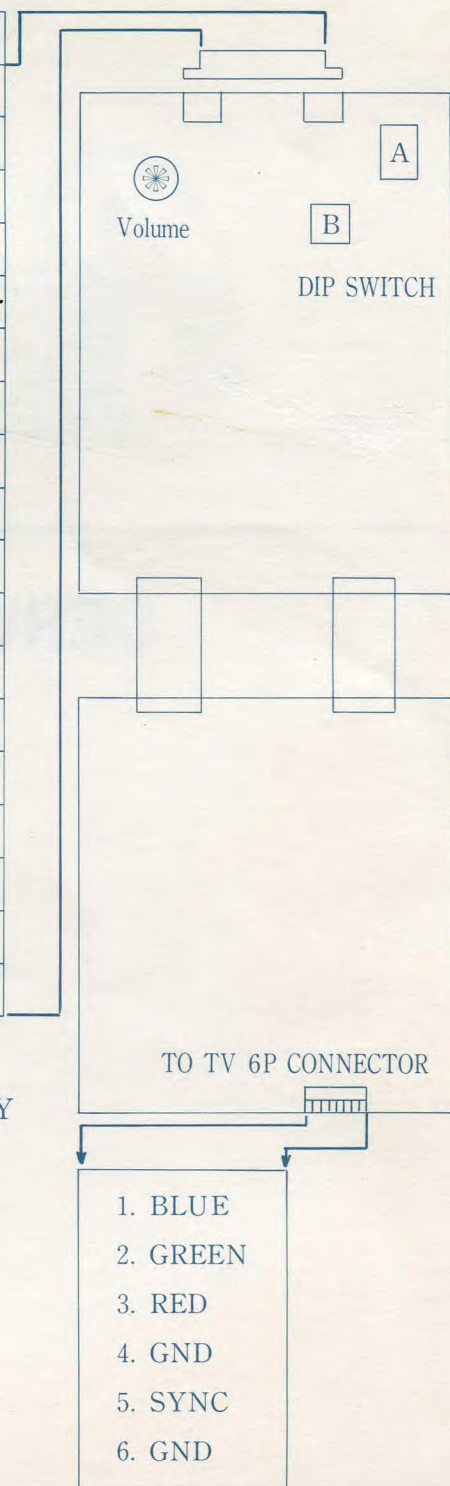


SERVICE MANUAL

TEHKAN **TEHKAN LTD.**

HEAD OFFICE : 41 KANDA HIGASHI-MATSUSHITA-CHO,
CHIYODA-KU TOKYO 101, JAPAN
PHONE : (03) 256-0378 TELEX : J27174 TEHKAN

COMPONENT SIDE	No.	SOLDER SIDE
2 P LEFT	1	2 P RIGHT
2 P DOWN	2	2 P UP
	3	2 P DISCHARGE
	4	
1 P LEFT	5	1 P RIGHT
1 P DOWN	6	1 P UP
	7	1 P DISCHARGE
	8	
2 P START	9	1 P START
COIN A	10	COIN B
GND	11	GND
GND	12	GND
GND	13	GND
SPEAKER	* 14	SPEAKER
+12 V	P. Key 15	+ 12 V
	16	
+ 5 V	17	+ 5 V
+ 5 V	18	+ 5 V



※ DO NOT ADJUST VOLTAGE AT POWER SUPPLY OUTPUT TERMINALS.
PLEASE ADJUST IT ON P.C.BOARD TO 5 V.

DIP SWITCH A (8P DIP SWITCH)

	DIP SWITCH No.							
	1	2	3	4	5	6	7	8
COIN A								
1 COIN 1 PLAY							OFF	OFF
1 COIN 2 PLAY							ON	OFF
1 COIN 3 PLAY							OFF	ON
1 COIN 6 PLAY							ON	ON
COIN B								
1 COIN 1PLAY					OFF	OFF		
2 COIN 1 PLAY					ON	OFF		
1 GOIN 2 PLAY					OFF	ON		
1 COIN 3 PLAY					ON	ON		
30,000, 100,000 POINT-1 EXTRA			OFF	OFF				
20,000, 50,000 POINT-1 EXTRA			ON	OFF				
30,000 POINT-1 EXTRA			OFF	ON				
NO EXTRA			ON	ON				
3 GUZZLERS	OFF	OFF						
4 GUZZLERS	ON	OFF						
5 GUZZLERS	OFF	ON						
FREE PLAY	ON	ON						

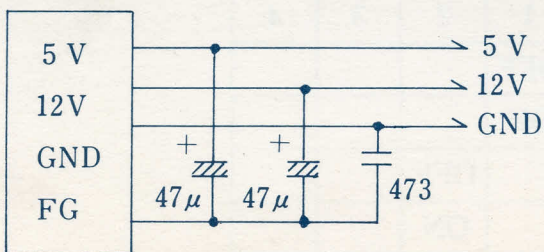
DIP SWITCH B (4P DIP SWITCH)

	1	2	3	4
COCKTAIL TABLE	OFF			
UPRIGHT	ON			
REGISTERED LETTER NUMBERS (10)		OFF		
REGISTERED LETTER NUMBERS (3)		ON		
DIFFICULTY				
MOST DIFFICULT			ON	ON
2nd "			OFF	ON
3rd "			ON	OFF
EASY			OFF	OFF

ATTENTION

- 1) SOUND AMPLIFIER FOR "GUZZLER" PCB IS THE B. T. L. BOTH SOUND OUTPUT LINES CAN LEAD ANY POINT BUT GROUND.
- 2) SPEAKER'S ATTENUATER SHOULD HAVE MORE THAN 5 WATTS. BUT THIS P. C. B. HAS A SOUND VOLUME.
- 3) PICTURE MIGHT GET SNOW NOISE AT MAX SOUND VOLUME.
IN THAT CASE PLEASE TRY FOLLOWING MODIFICATION.

①



②

