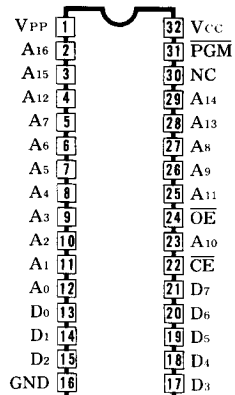


型名	社名	温度範囲 (°C)	スイッチング特性					電 源		入 力			出力/測定電流			備 考 [*typ]
			TAAC max (ns)	TCAC max (ns)	TOH max (ns)	TOE max (ns)	TOD max (ns)	VDD (V)	I DD/STANDBY (mA)	VIL max (V)	VIH min (V)	CI max (pF)	VOL/IVOL max (V/mA)	VOH/IOH min (V/mA)	CO max (pF)	
Am27C100-170	AMD	0~70	170	170	0	65	50	4.5~5.5	30/1.0	0.8	2.0	12	0.45/2.1	2.4/0.4	12	
Am27C100-175	AMD	0~70	170	170	0	65	50	4.75~5.25	30/1.0	0.8	2.0	12	0.45/2.1	2.4/0.4	12	
Am27C100-200	AMD	0~70	200	200	0	75	60	4.5~5.5	30/1.0	0.8	2.0	12	0.45/2.1	2.4/0.4	12	
Am27C100-205	AMD	0~70	200	200	0	75	60	4.75~5.25	30/1.0	0.8	2.0	12	0.45/2.1	2.4/0.4	12	
Am27C100-250	AMD	0~70	250	250	0	100	60	4.5~5.5	30/1.0	0.8	2.0	12	0.45/2.1	2.4/0.4	12	
Am27C100-255	AMD	0~70	250	250	0	100	60	4.75~5.25	30/1.0	0.8	2.0	12	0.45/2.1	2.4/0.4	12	
Am27C100-300	AMD	0~70	300	300	0	120	60	4.5~5.5	30/1.0	0.8	2.0	12	0.45/2.1	2.4/0.4	12	
Am27C100-305	AMD	0~70	300	300	0	120	60	4.75~5.25	30/1.0	0.8	2.0	12	0.45/2.1	2.4/0.4	12	
Am27X100-200	AMD	0~70	200	200	0	75	60	4.5~5.5	30/1.0	0.8	2.0	12	0.45/2.1	2.4/0.4	12	
Am27X100-205	AMD	0~70	200	200	0	75	60	4.75~5.25	30/1.0	0.8	2.0	12	0.45/2.1	2.4/0.4	12	
Am27X100-250	AMD	0~70	250	250	0	100	60	4.5~5.5	30/1.0	0.8	2.0	12	0.45/2.1	2.4/0.4	12	
Am27X100-255	AMD	0~70	250	250	0	100	60	4.75~5.25	30/1.0	0.8	2.0	12	0.45/2.1	2.4/0.4	12	
Am27X100-300	AMD	0~70	300	300	0	120	60	4.5~5.5	30/1.0	0.8	2.0	12	0.45/2.1	2.4/0.4	12	
Am27X100-305	AMD	0~70	300	300	0	120	60	4.75~5.25	30/1.0	0.8	2.0	12	0.45/2.1	2.4/0.4	12	
HN27C101AP/AF/ATT/ARR-12	HITACHI	0~70	120	120	0	60	50	4.5~5.5	45/1	0.8	2.2	10	0.45/2.1	2.4/1	15	
HN27C101AP/AF/ATT/ARR-15	HITACHI	0~70	150	150	0	70	60	4.5~5.5	45/1	0.8	2.2	10	0.45/2.1	2.4/1	15	
HN27C101AP/AF/ATT/ARR-20	HITACHI	0~70	200	200	0	70	50	4.5~5.5	45/1	0.8	2.2	10	0.45/2.1	2.4/1	15	
HN27C101AP/AF/ATT/ARR-25	HITACHI	0~70	250	250	0	100	60	4.5~5.5	45/1	0.8	2.2	10	0.45/2.1	2.4/1	15	
HN27C301AP/AF/FP-12	HITACHI	0~70	120	120	0	60	50	4.5~5.5	45/1	0.8	2.2	10	0.45/2.1	2.4/1	15	
HN27C301AP/AF/FP-15	HITACHI	0~70	150	150	0	70	60	4.5~5.5	45/1	0.8	2.2	10	0.45/2.1	2.4/1	15	
HN27C301AP/AF/FP-20	HITACHI	0~70	200	200	0	70	50	4.5~5.5	45/1	0.8	2.2	10	0.45/2.1	2.4/1	15	
HN27C301AP/AF/FP-25	HITACHI	0~70	250	250	0	100	60	4.5~5.5	45/1	0.8	2.2	10	0.45/2.1	2.4/1	15	
HN27V101A-25	HITACHI	0~70	250	250	0	120	120	2.7~5.5	30/1	0.8	2.2	10	0.45/1	2.4/0.4	15	
HN27V101A-25	HITACHI	0~70	250	250	0	120	120	2.7~5.5	30/1	0.8	2.2	10	0.45/1	2.4/0.4	15	
LH571000-15	SHARP	0~70	150	150	0	50	50	4.5~5.5	40/0.1	0.8	2.2	4*	0.45/2.1	2.4/0.4	8*	
MSM27C100FP	MITSUBISHI	-10~80	200	200	0	75	60	4.75~5.25	50/1	0.8	2.0	10	0.45/2.1	2.4/0.4	15	
MSM27C100J	MITSUBISHI	-10~80	200	200	0	75	60	4.75~5.25	50/1	0.8	2.0	10	0.45/2.1	2.4/0.4	15	
MSM27C100P	MITSUBISHI	-10~80	200	200	0	75	60	4.75~5.25	50/1	0.8	2.0	10	0.45/2.1	2.4/0.4	15	
MSM27C100RV	MITSUBISHI	-10~80	200	200	0	75	60	4.75~5.25	50/1	0.8	2.0	10	0.45/2.1	2.4/0.4	15	
MSM27C100VP	MITSUBISHI	-10~80	200	200	0	75	60	4.75~5.25	50/1	0.8	2.0	10	0.45/2.1	2.4/0.4	15	
MBM27C1001P-17	FUJITSU	0~70	170	170	0	70	60	4.5~5.5	40/1	0.8	2.0	10*	0.45/2.1	2.4/0.4	10*	
MBM27C1001P-20	FUJITSU	0~70	200	200	0	70	60	4.5~5.5	30/1	0.8	2.0	10*	0.45/2.1	2.4/0.4	10*	
MBM27C1001P-25	FUJITSU	0~70	250	250	0	100	60	4.5~5.5	30/1	0.8	2.0	10*	0.45/2.1	2.4/0.4	10*	
TC54H1000AP/AF-10	TOSHIBA	0~70	100		10	50	50	4.75~5.25	30/1							
TC54H1000AP/AF-85	TOSHIBA	0~70	85		5	45	30	4.75~5.25	30/1							
TC541000AP/AF-12	TOSHIBA	0~70	120		0	60	50	4.75~5.25	30/1							
TC541000AP/AF-15	TOSHIBA	0~70	150		0	70	60	4.75~5.25	30/1							
TC541000P/F-15	TOSHIBA	-40~85	150		0	70	60	4.75~5.25	30/1							
TC541000P/F-20	TOSHIBA	-40~85	200		0	70	60	4.75~5.25	30/1							

1M CMOS ONE TIME-EPROM (131,072×8) P571000

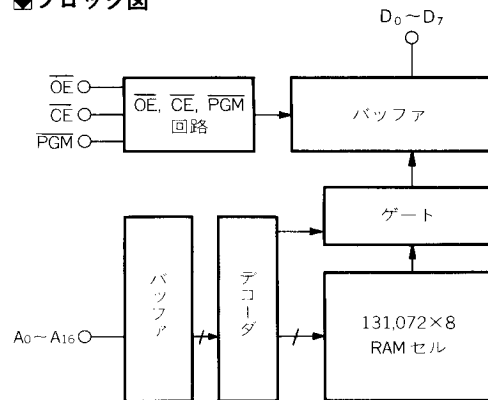
●ピン接続



●特徴

- 完全スタティック動作。
- 571001の窓なしタイプ。
- 全入出力 TTL コンパチブル。
- P571000

●ブロック図



●電源

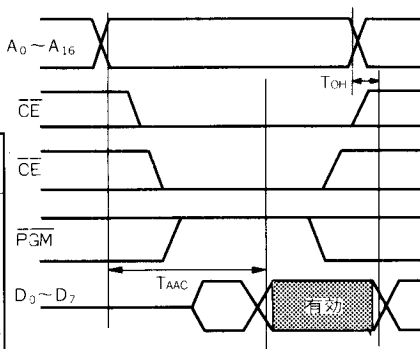
V_{CC} : +5V Pin32
 GND Pin16
 V_{PP} : +5V Pin 1

●動作表

PGM	入 力		DO	動 作
	CE	OE		
H	L	L	DO	Read
X	X	H	High-Z	
X	H	X	High-Z	Stand-by
L	L	X	DI	Operating
X	H	X	High-Z	Program Inhibit
H	L	L	DO	Program Verify

●波形

●READ



●READ(高速プログラム方式)

