

CT-765 MOTORCYCLE

EIGHT Motorcycle Racing/Jumping Games in which the rider must defy all odds by skidding through obstacles, jumping over a string of buses and racing against the clock while still keeping both wheels on the road to amass the points it takes to win. The stakes are high, but so are the thrills.

GAME SELECTOR KEY:

2	Timeout, amateur or professional
5	Obstacle Race, amateur or professional
7	Motor Jump, amateur or professional
10	Rally Run, amateur or professional

SKILL SELECTOR SWITCHES:

Switch Setting	Switch 3
"A"	Amateur
"B"	Professional

SPECIFICATIONS:

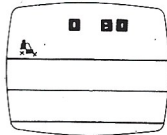
Only the right-hand joystick moving in the vertical direction controls the engine speed. For faster speeds move in the upward position, for slow speeds in the downward position. Engine always starts at the slowest speed.

CAUTION: Do not attempt to use this cartridge with any other video game system.

GAME DESCRIPTION:

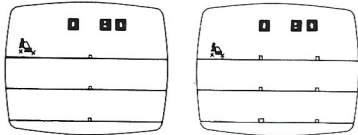
2 Time Out

The object is to complete the course in the shortest possible time. Engine speed will begin at 1, to accelerate, slow down and increase again. This shifting procedure will raise engine speed to 2. Another shift will raise it to 3, the fastest speed. The time of each run is recorded in the score. In professional mode, the cycle will crash if the engine speed is increased too rapidly.



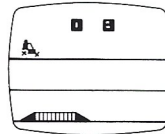
5. Obstacle Race

The object is to complete the course in the shortest possible time. The player's cycle must perform a "wheelie" over every obstacle encountered, and this is done by a rapid increase in engine speed. The professional mode presents one more obstacle per track than normal, and the cycle is more difficult to control



7. Motor Jump

The object of the player is to jump successfully off the ramp and over as many buses as possible. The initial game begins with 8 buses, and every successful attempt results in an increase in buses by one. The left score records the number of failed attempts, while the right records the number of buses to be jumped. The amateur mode allows seven failures, the professional mode only three. In the professional mode, the cycle is again, very difficult to control.



10. Rally Run

This game is similar to Motor Jump, but there are obstacles along the track in this event.

